

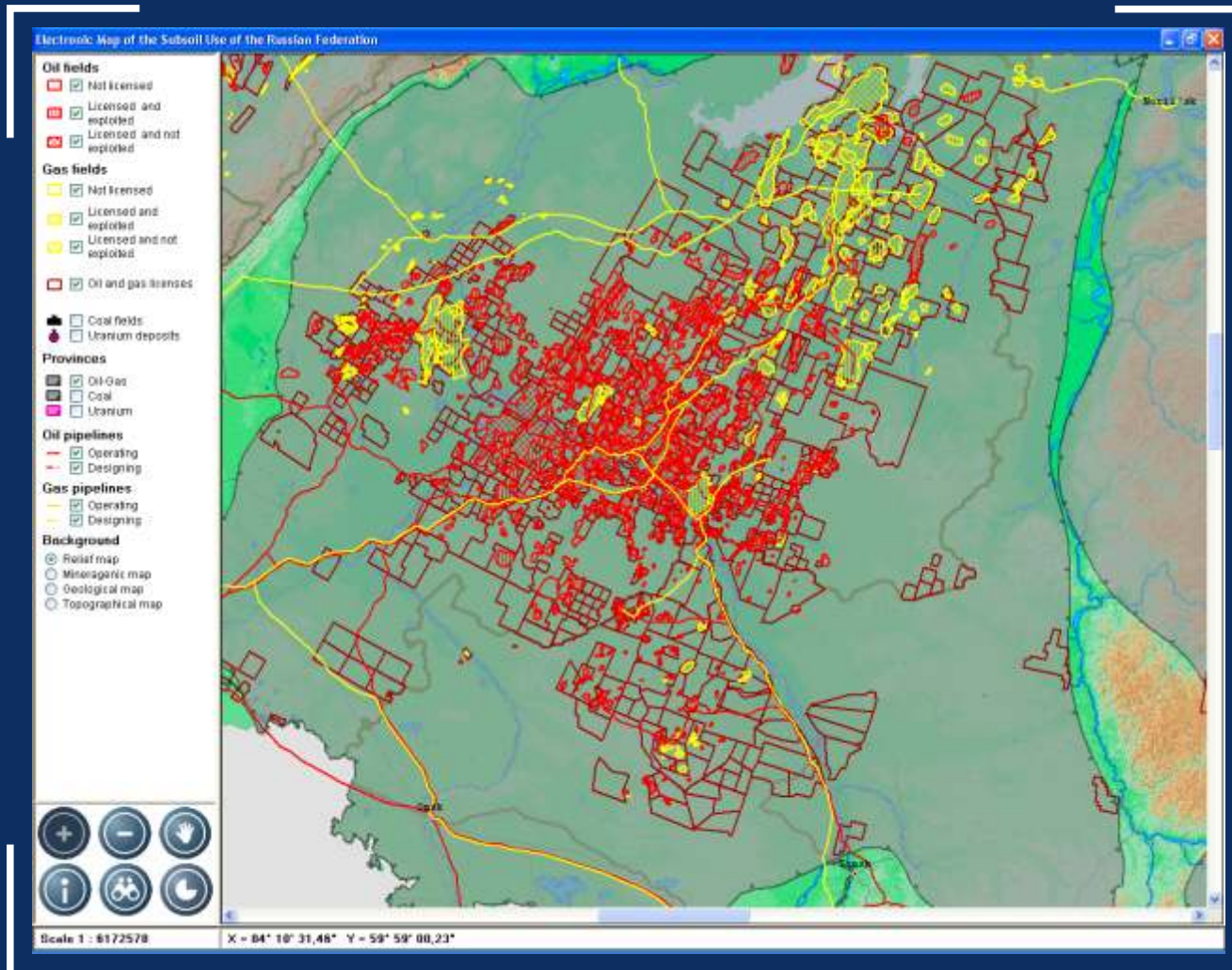


Interactive Electronic Map of the Subsoil Use in the Russian Federation



Current version contains
data on Petroleum, Gas,
Coal and Uranium objects
(other raw materials are planned)

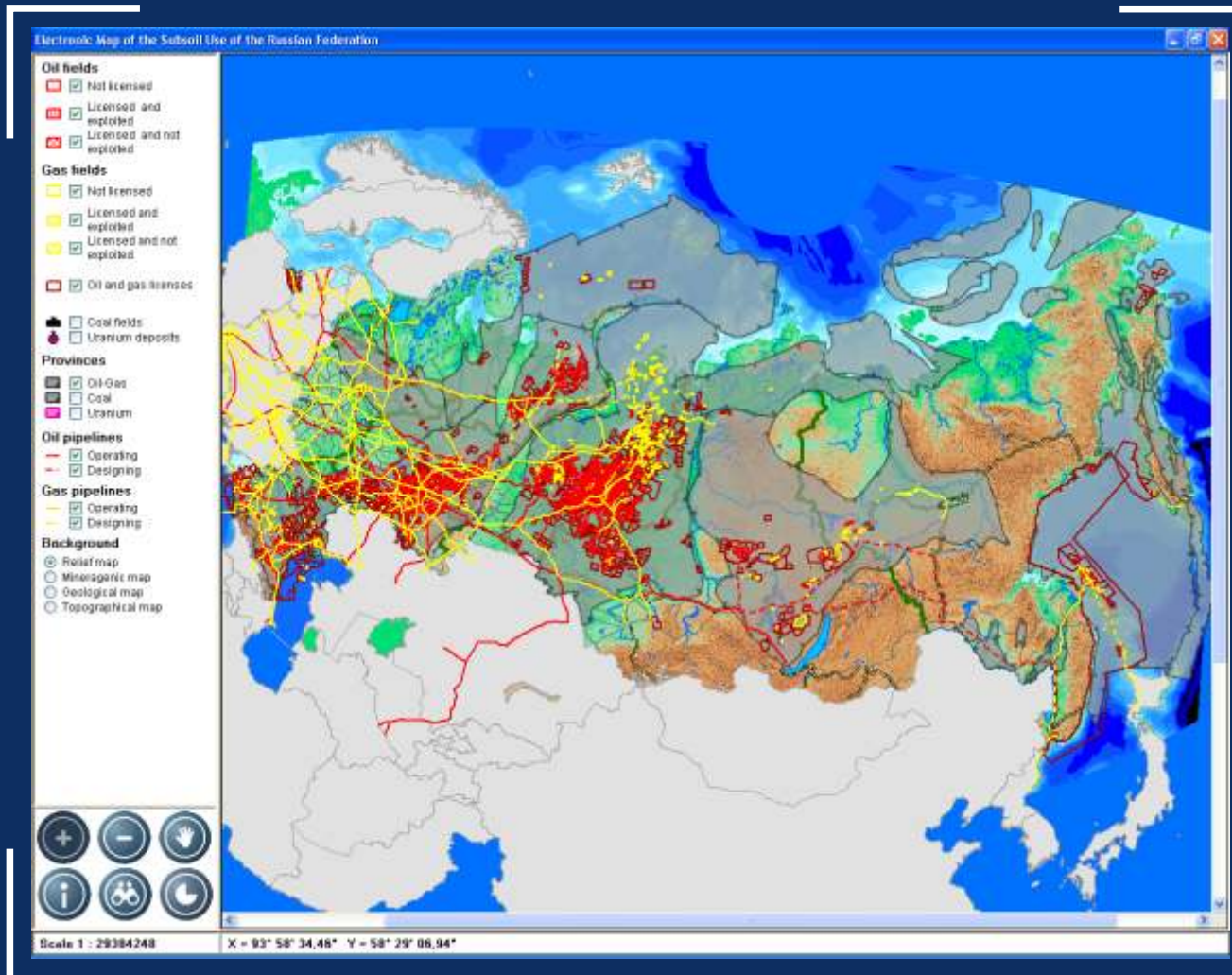
Map Contents Overview



Interactive Electronic Map of the Subsoil Use in the Russian Federation contains numeric data on:

- ◀ Oil and Gas Fields
- ◀ Licensed areas
- ◀ Provinces
- ◀ Pipelines

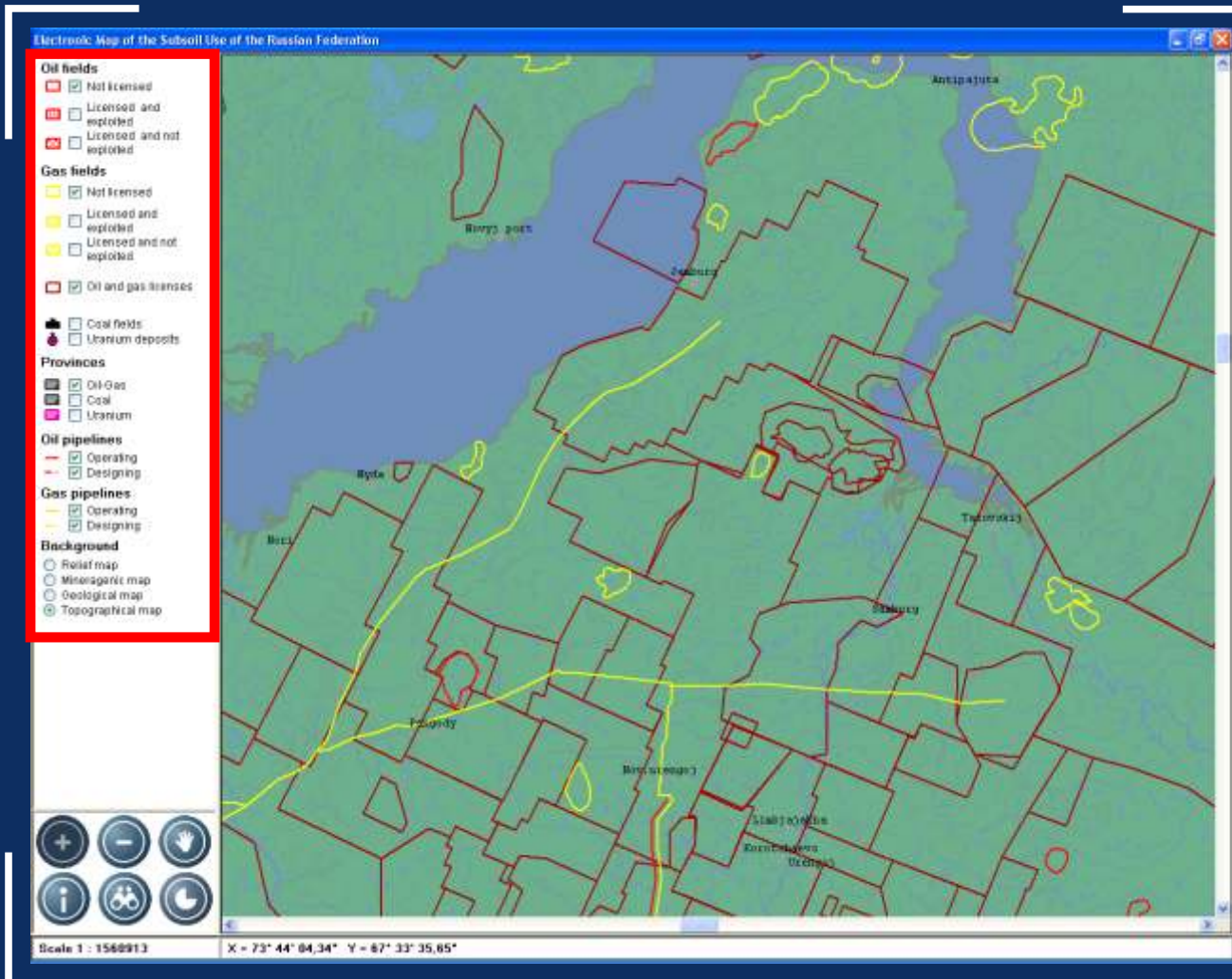
Map Features Overview



Interactive Electronic Map of the Subsoil Use in the Russian Federation supports standard GIS features like:

- ◆ Managing contents
- ◆ Managing scale and field of view
- ◆ Searching objects
Viewing attribute values
- ◆ Viewing charts

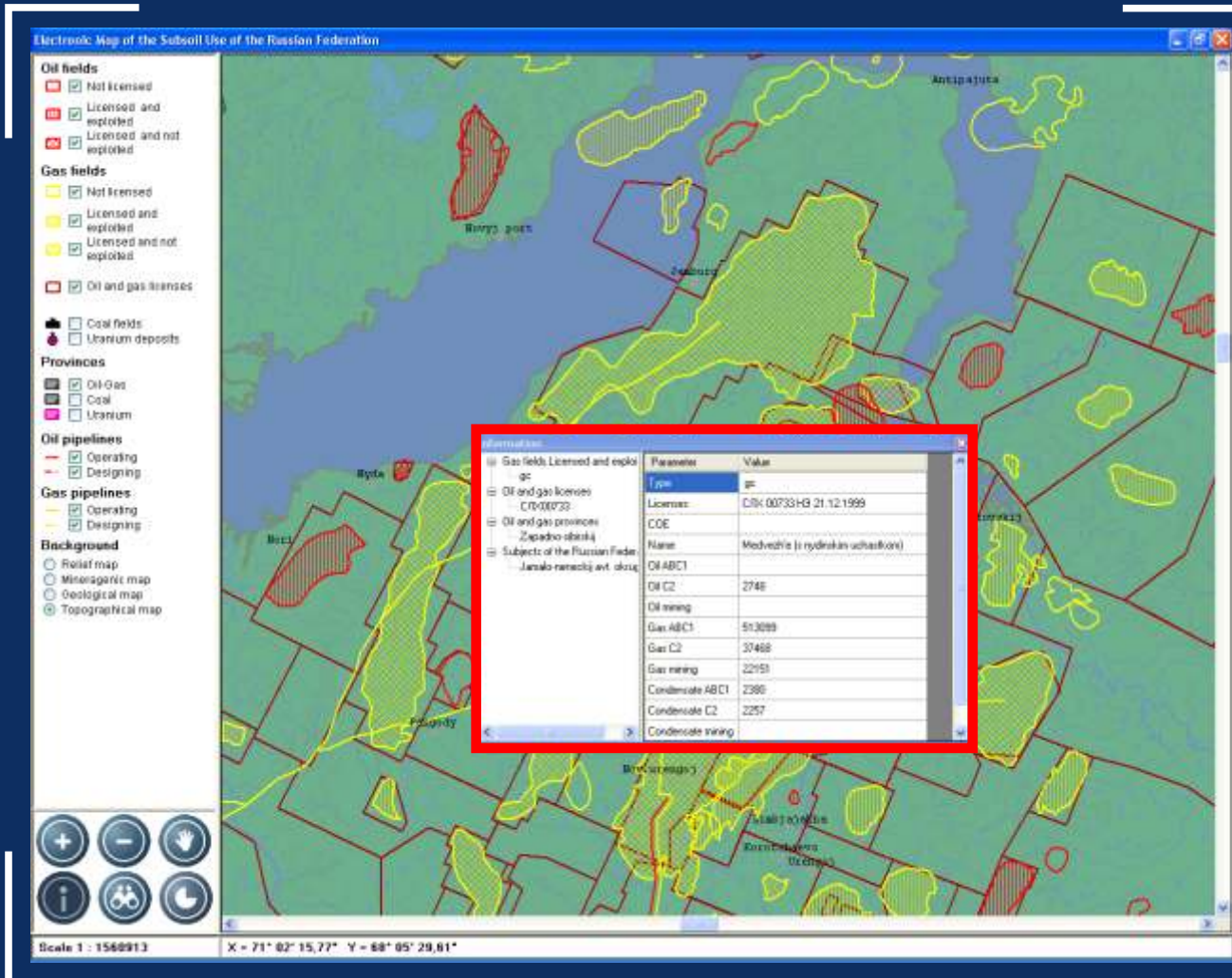
Map Legend



Interactive legend provides the way to interactively manage contents of the Map



Data on Oil and Gas Fields



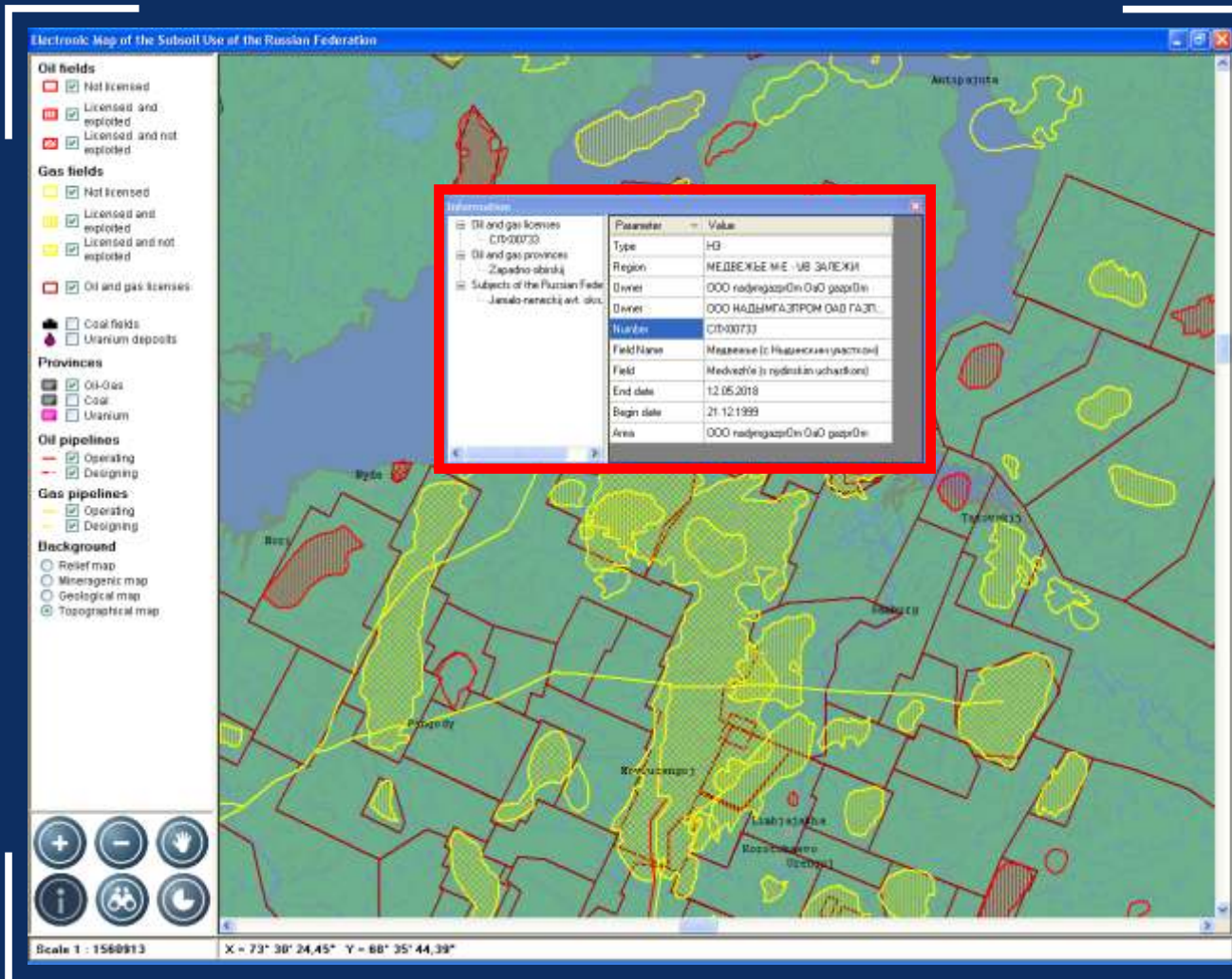
Data on oil and gas fields includes:

- ◆ Name and type
- ◆ Reserves
- ◆ Production
- ◆ Coefficient of oil extraction
- ◆ List of licenses (if any)

Parameter	Value
Type	gc
Licenses	ОГК 00733-НЗ 21.12.1999
COE	
Name	Медведице (в гидродинамическом)
Oil ABC1	
Oil C2	2748
Oil mining	
Gas ABC1	513099
Gas C2	37468
Gas mining	22151
Condensate ABC1	2380
Condensate C2	2257
Condensate mining	

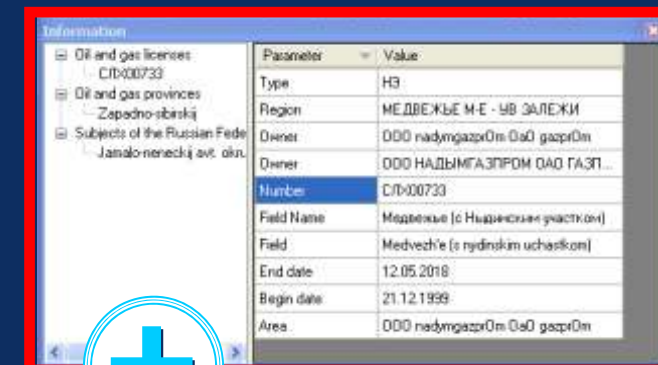


Data on Subsoil Use Licenses

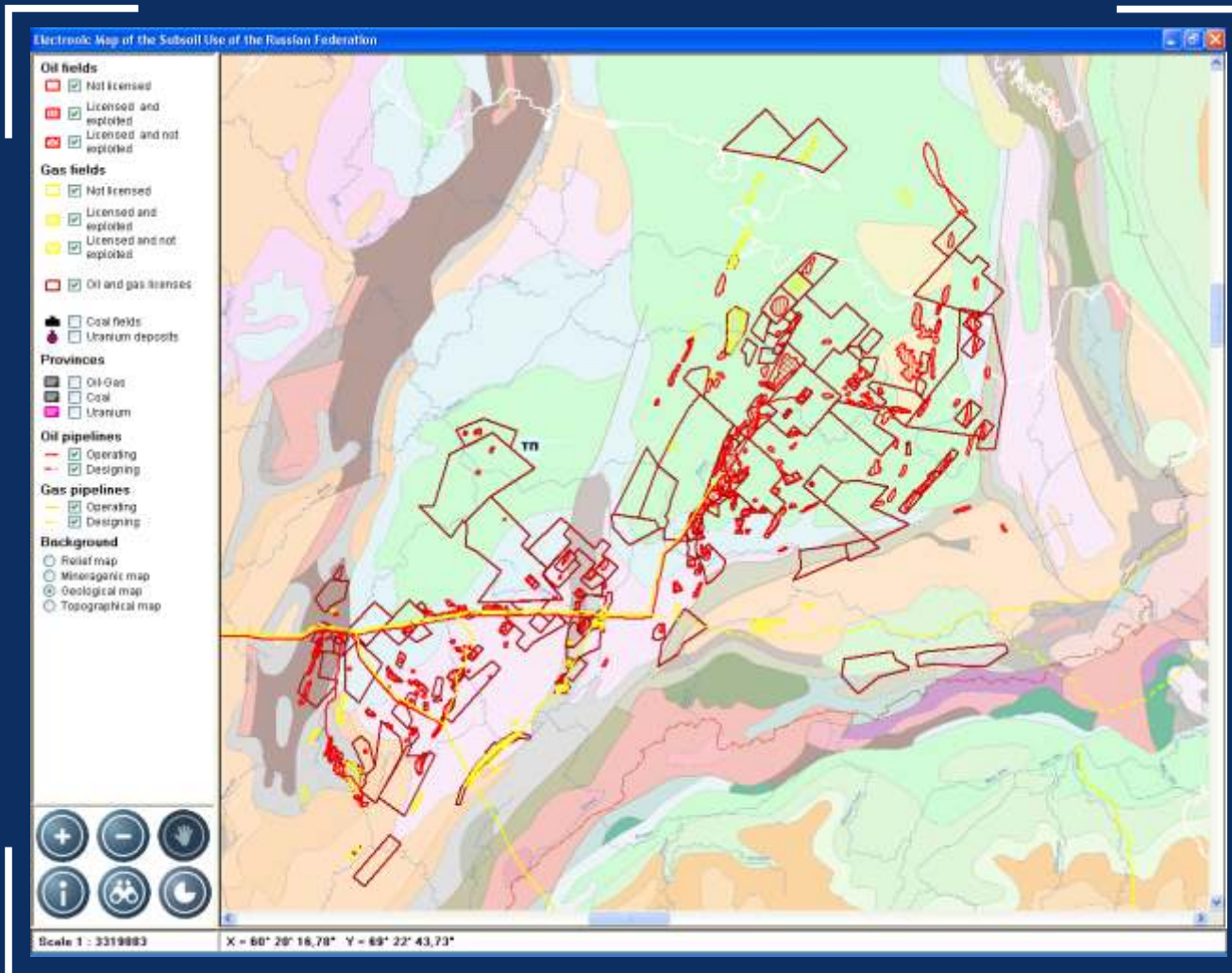


Data on subsoil use licenses includes:

- ◆ Number and type
- ◆ Name of deposit
- ◆ Owner



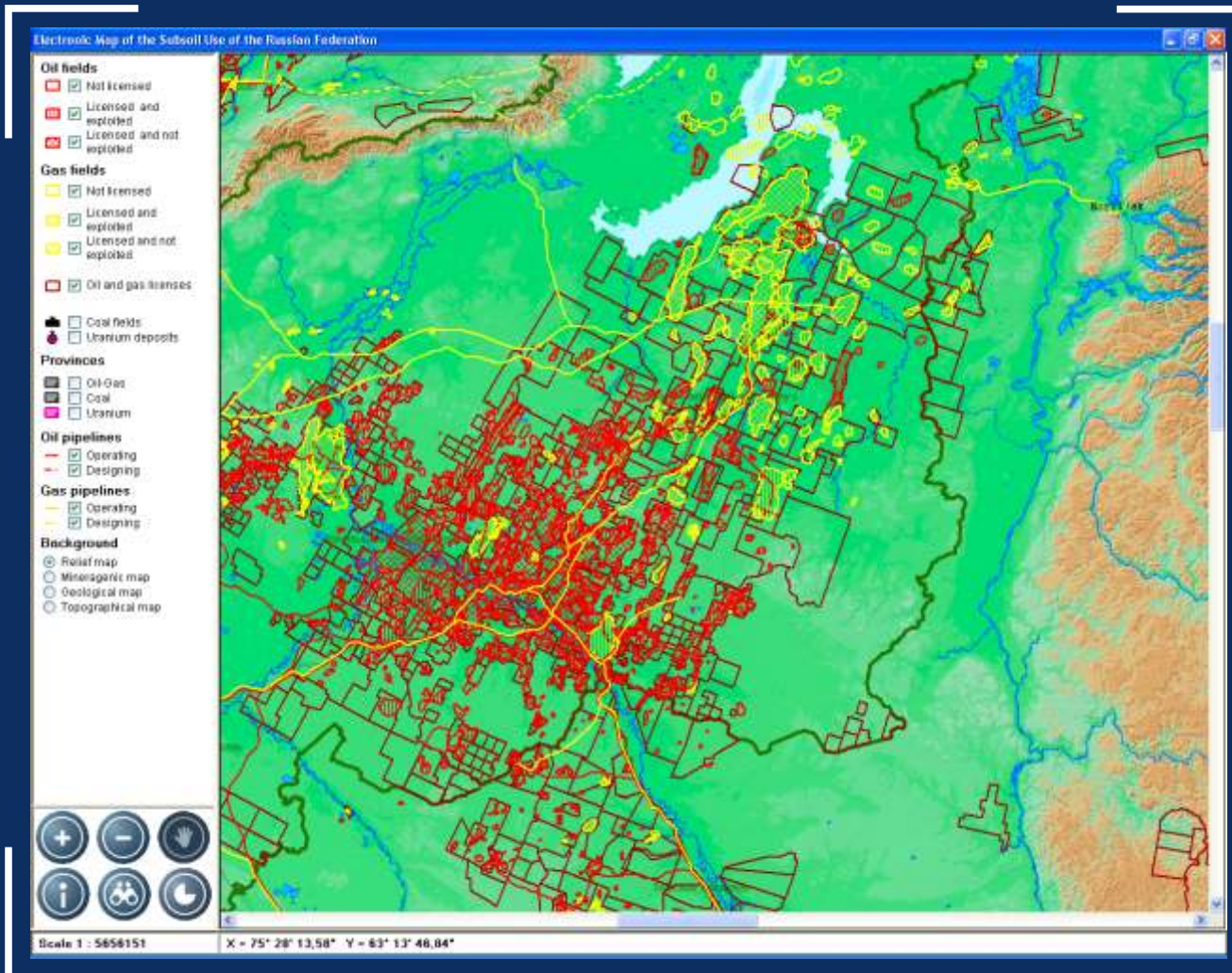
Background Layers



Background could be selected from the following raster layers:

- ◆ Relief map
- ◆ Mineragenic map
- ◆ Geological map
- ◆ Topographical map

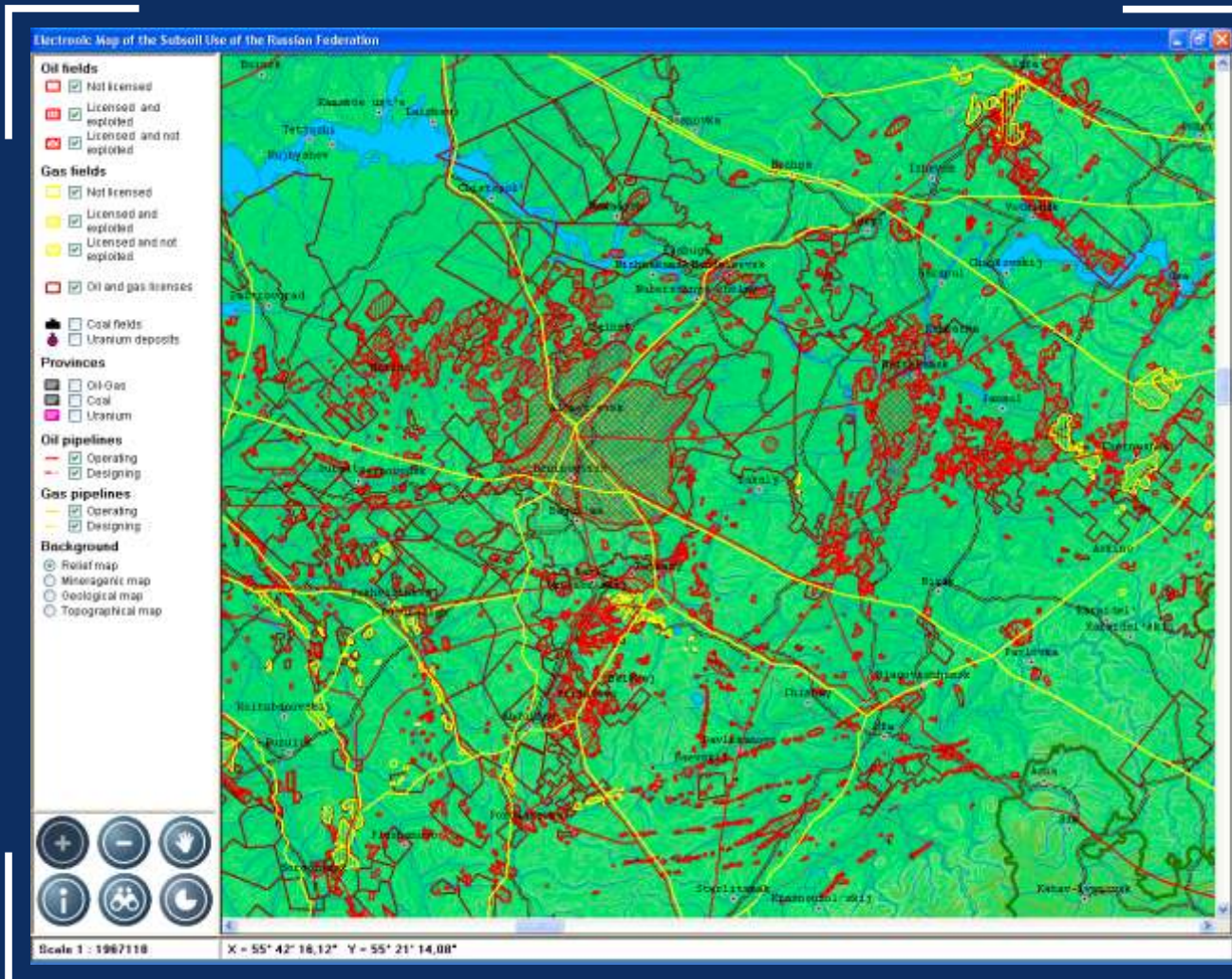
User Interface Structure



Main interface elements are:

- ◆ Field of view
- ◆ Legend
- ◆ Control panel
- ◆ Status bar

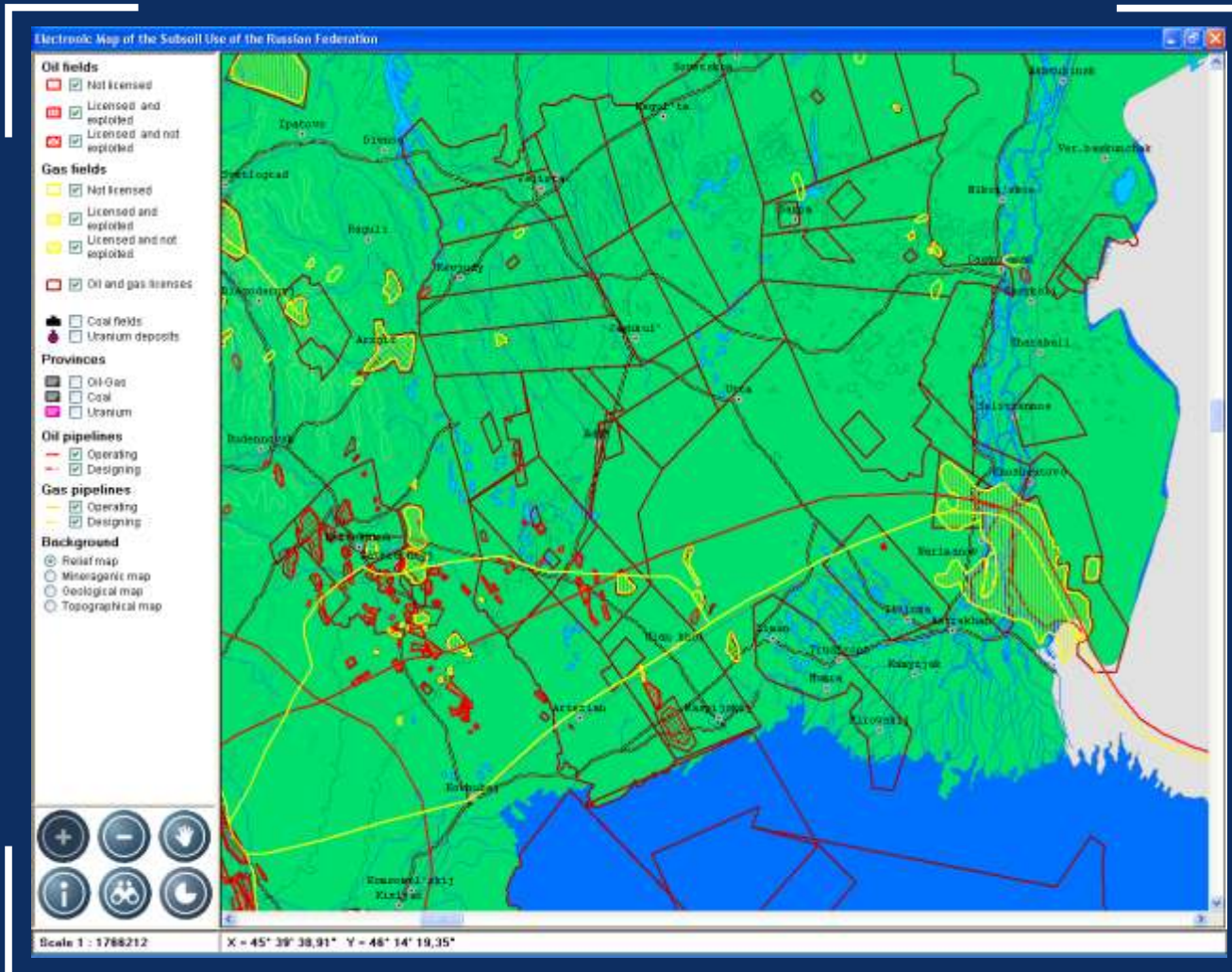
Managing the Scale of the Map



Scale can be managed discretely or continuously



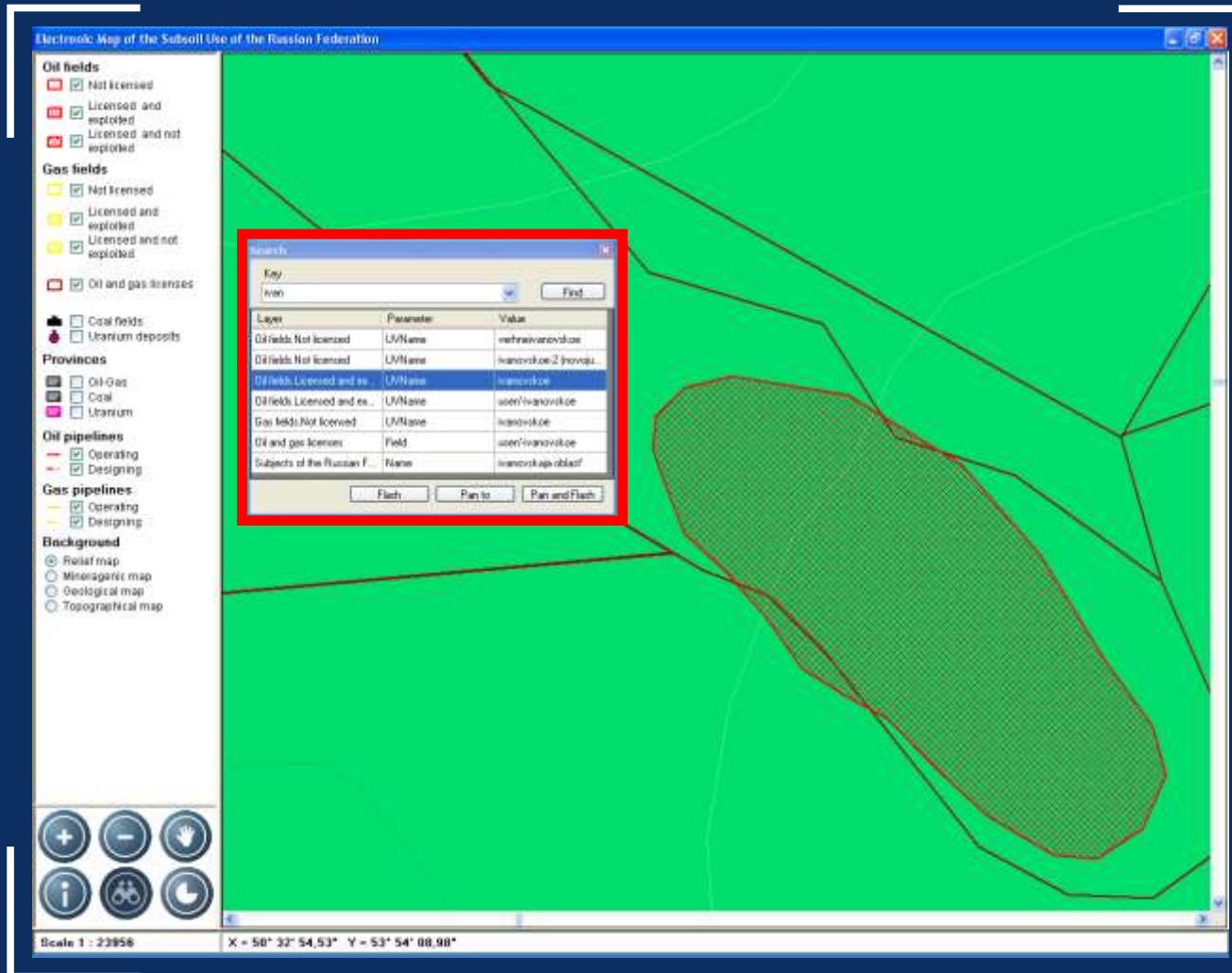
Managing the Field of View



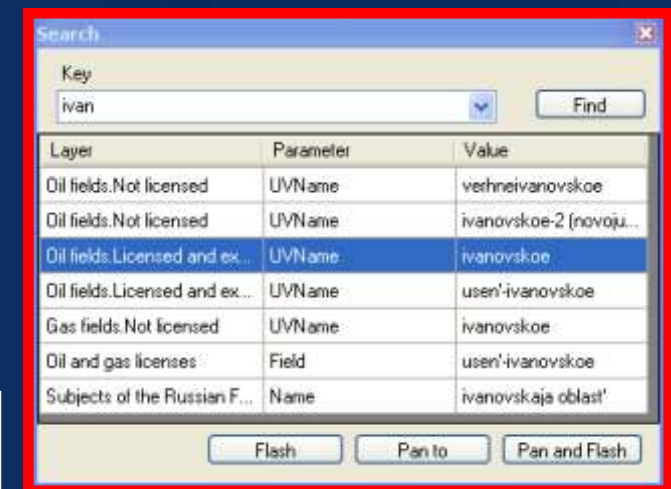
Field of view can be precisely set by means of “drag-and-drop”



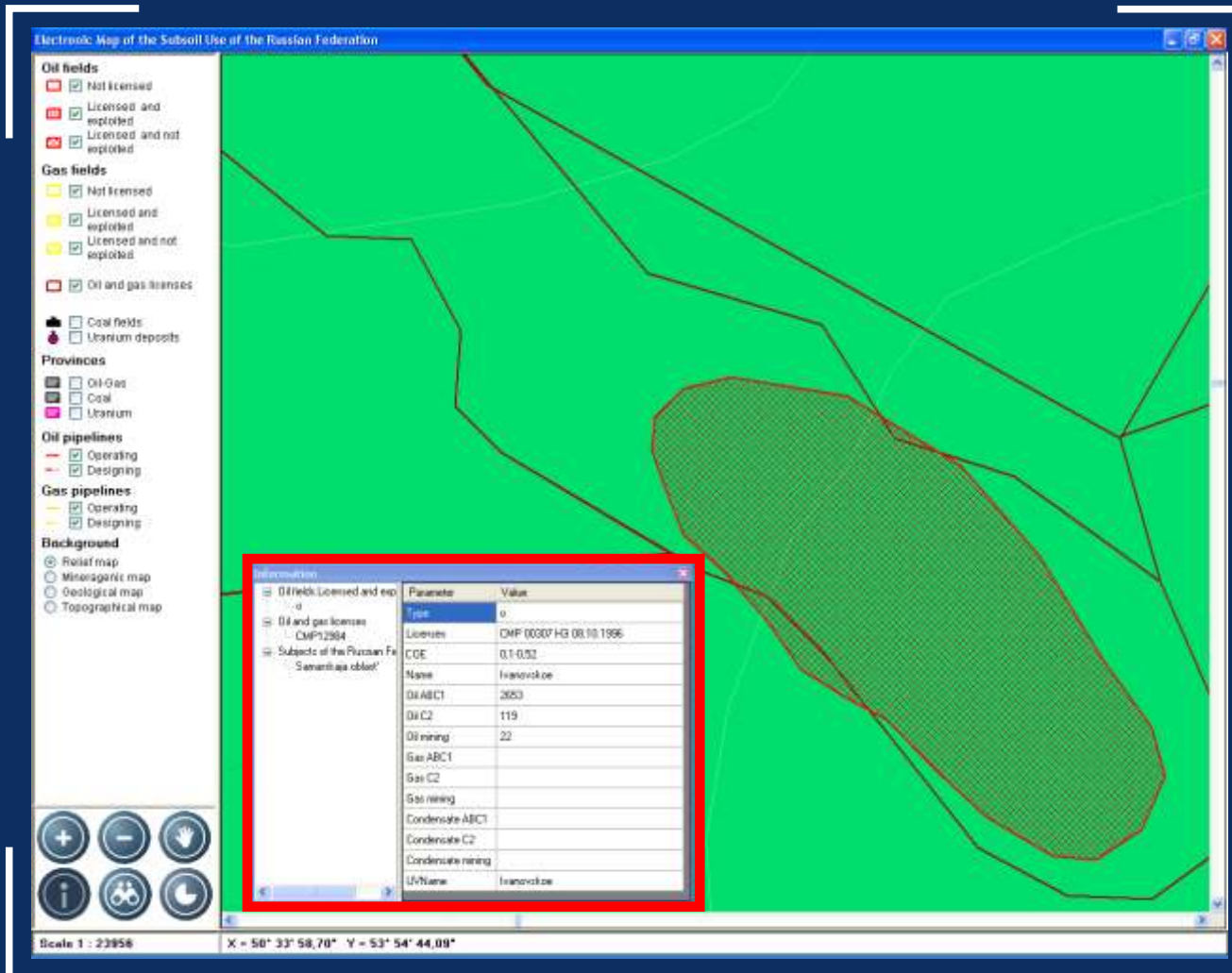
Searching Objects on the Map



Objects can be searched by the value of any attribute



Obtaining Data on the Objects



Found objects can be easily prompted for the complete attribute set

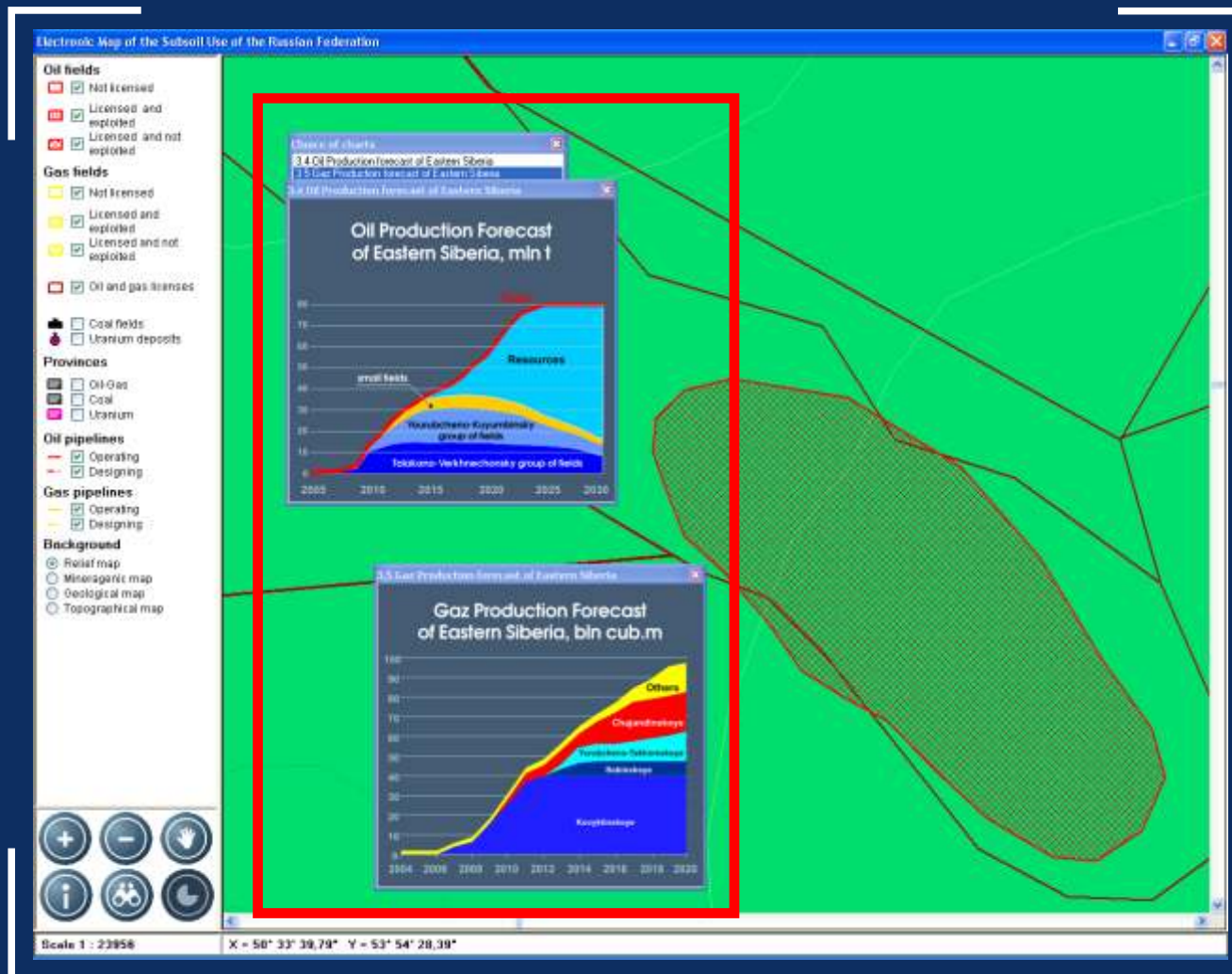


The information window shows a tree view on the left with the following structure:

- Oil fields Licensed and exp: 0
- Oil and gas licenses CMP12884
- Subjects of the Russian Federation Samarskaja oblast'

Parameter	Value
Type	0
Licenses	CMP 00307 H3 08.10.1996
CDE	0,1-0,52
Name	Ivanovskoe
Oil ABC1	2653
Oil C2	119
Oil mining	22
Gas ABC1	
Gas C2	
Gas mining	
Condensate ABC1	
Condensate C2	
Condensate mining	
UVName	Ivanovskoe

Obtaining Data on the Objects



Interactive map integrates limited set of the static charts related to this subject area (planned to be dynamic)

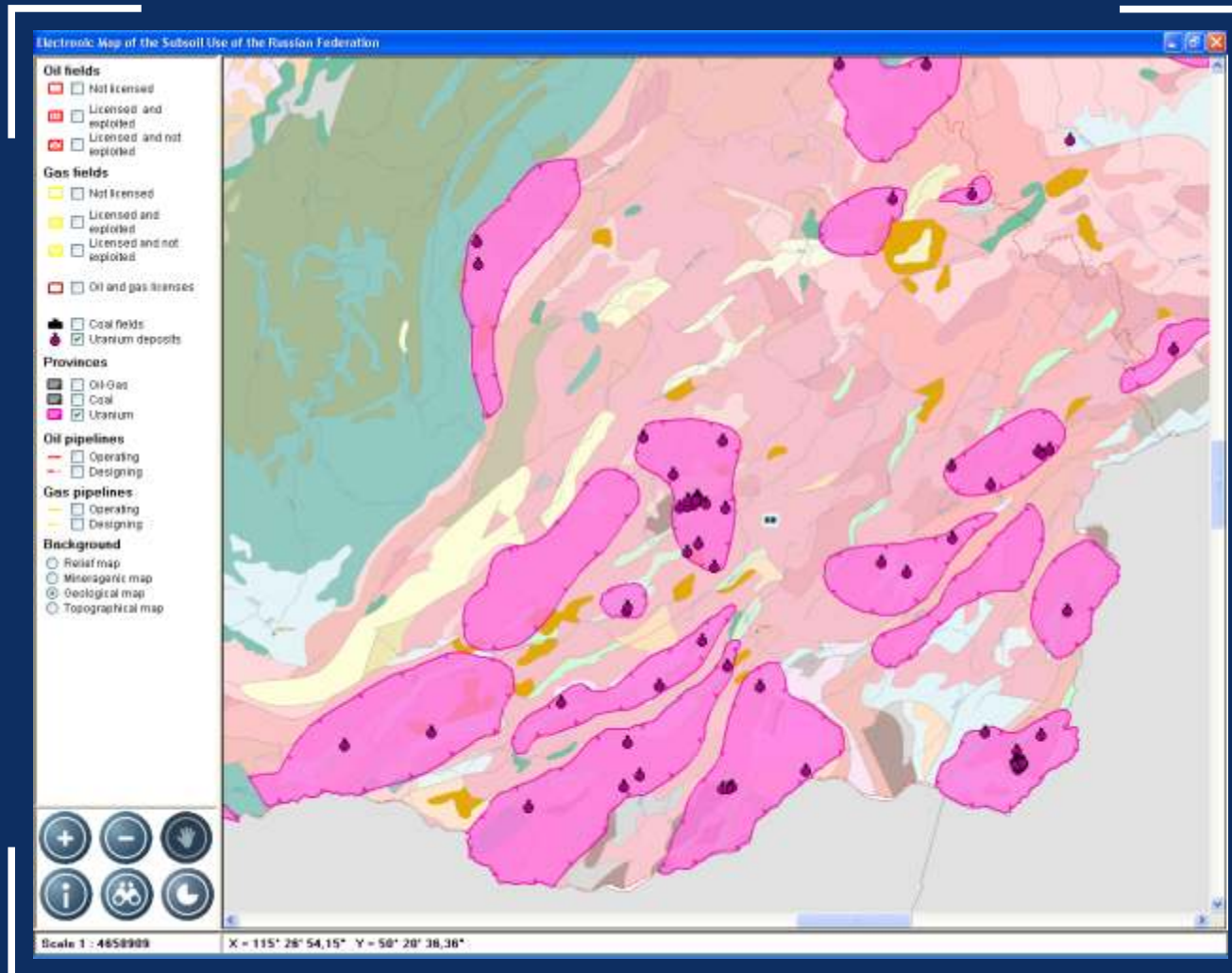


Tablet PC Implementation



User interface is specially optimized for using Interactive Electronic Map of the Subsoil Use in the Russian Federation on the Tablet PCs

Sources of Information



Most significant sources of Information for the Interactive Electronic Map of the Subsoil Use in the Russian Federation are:

- Balance of Mineral Resources of the Russian Federation
- State Cadastre of Mineral Deposits of Russian Federation
- State Registry of Subsoil Use Licenses
- Electronic Map of Licensed Areas for Oil and Gas Exploration



Thank you for your attention!

